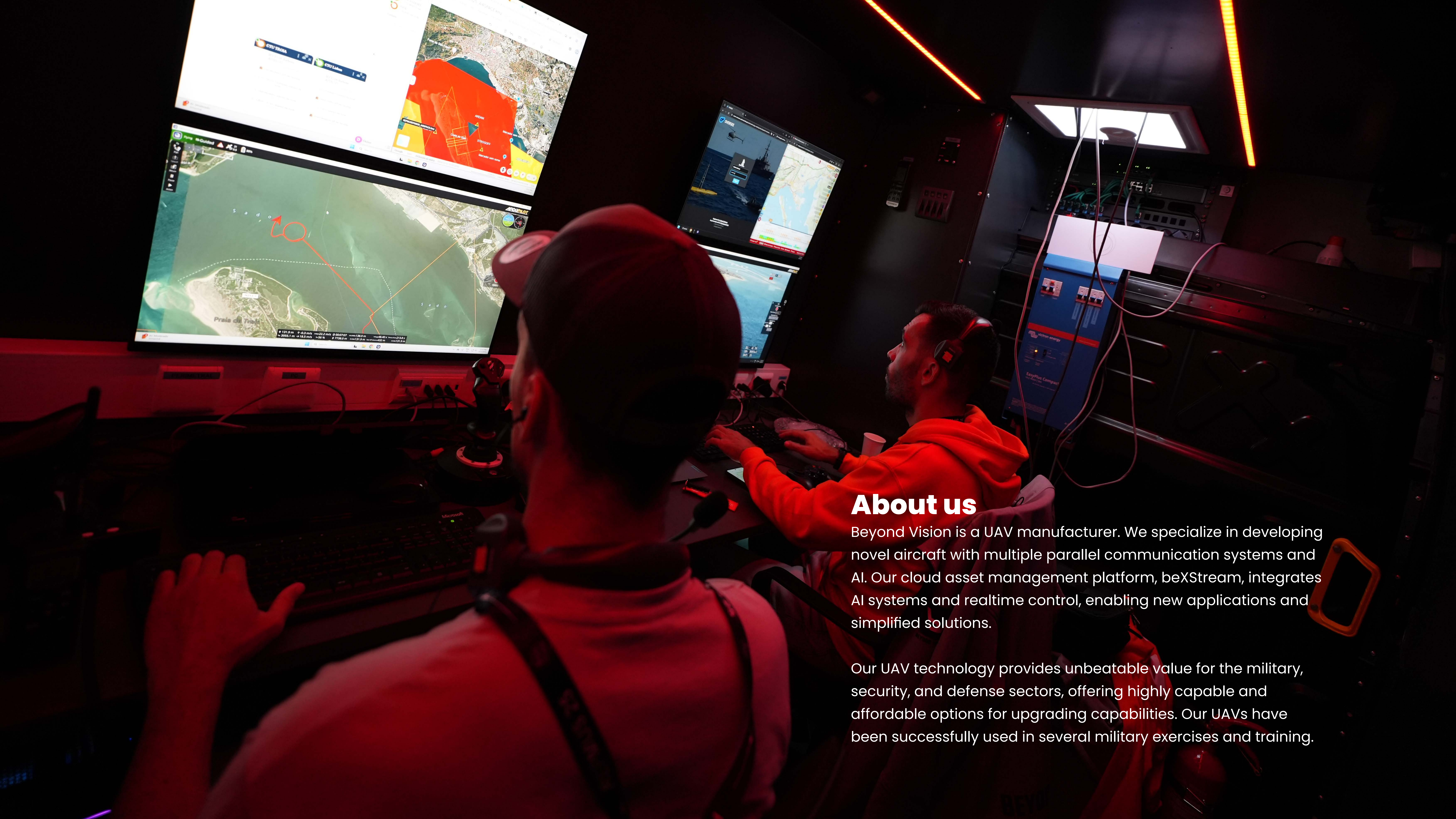




BEYOND VISION



About us

Beyond Vision is a UAV manufacturer. We specialize in developing novel aircraft with multiple parallel communication systems and AI. Our cloud asset management platform, beXStream, integrates AI systems and realtime control, enabling new applications and simplified solutions.

Our UAV technology provides unbeatable value for the military, security, and defense sectors, offering highly capable and affordable options for upgrading capabilities. Our UAVs have been successfully used in several military exercises and training.

BVQ418

Smart. Portable. Powerful.

AI-driven drones powered by 5G connectivity have the potential to revolutionize defense operations. BVQ418 exemplifies this evolution, offering a glimpse into the future of UAV operations. As technology advances, drones like BVQ418 will play a more prominent role in demanding projects, providing unique capabilities to safeguard national security and respond swiftly to evolving threats.



Maximum Flight Time	90 minutes
Positioning Accuracy	2 cm
Rate of Climb	15 km/h
Wind Tolerance	70 km/h
Maximum Speed	80 km/h
Voltage	44.4 V
Storage Capacity	2 x 17.500 mAh
Maximum Payload	7 kg
Aircraft's Weight	5 kg
Maximum Take-off Weight	18 kg

Versatile and Adaptable UAV Technology for Modern Warfare



As the global security landscape evolves, the use of unmanned aerial vehicles (UAVs) has become increasingly prevalent in military and defense operations.



AI enabled with 80x zoom



SIM catcher



Lightweight RGB & thermal payloads



Multi-sensing payloads with HD thermal and night vision



Longwave Infrared Thermal Camera Module



Up to 150MP Mapping Payloads



360° LiDAR



Multispectral Payloads



30X Optical zoom; Thermal sensor; High accuracy laser rangefinder; 2K Wide Angle lens



Bathymetric LiDAR laser scanner



Flexible. Adaptable. Efficient.



HEIFU PRO is an e-Hexacopter with a design and manufacture that follows NATO guidelines.

Its design enables the installation of different modules to answer the needs of the operation.

This configuration is ideal to run complex Artificial Intelligence algorithms, making the HEIFU the perfect drone for complex tasks.

Maximum Flight Time	60 minutes
Positioning Accuracy	2 cm
Rate of Climb	22 km/h
Wind Tolerance	65 km/h
Maximum Speed	80 km/h
Voltage	22.2 V
Battery Capacity	2 x 30.000 mAh
Maximum Payload	3.5 kg
Aircraft's Weight	12 kg
Maximum Take-off Weight	16 kg

Intelligence Surveillance Reconnaissance

- Advanced communications
- Large autonomy
- AI Autonomous Missions
- GNSS and Comms denied Operations
- Enhanced positioning accuracy
- A stable and safe flight, with complete redundancy



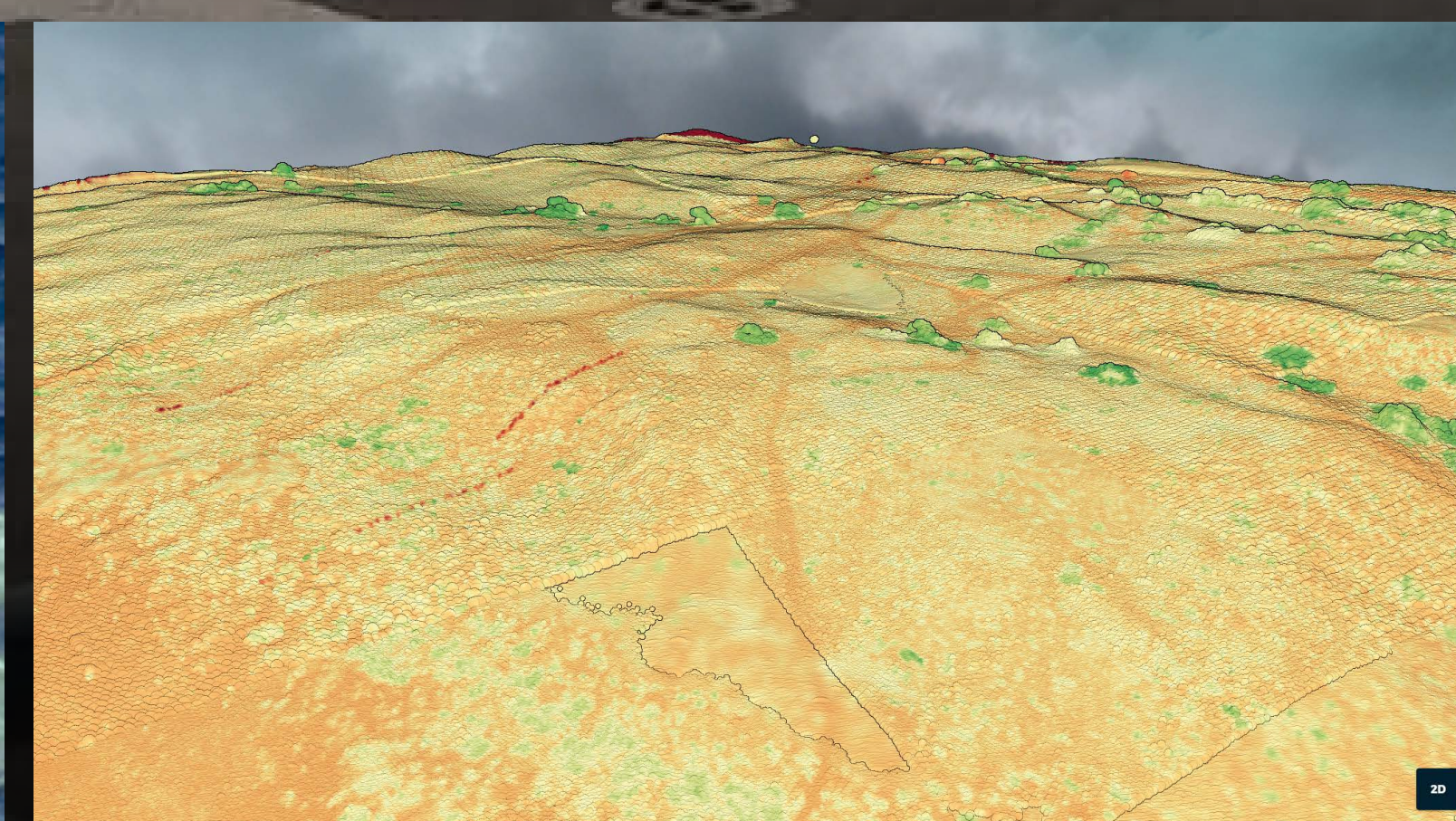
Daily Ops on high seas
- RGB mode



Night Patrolling BVOLS
- Thermal mode



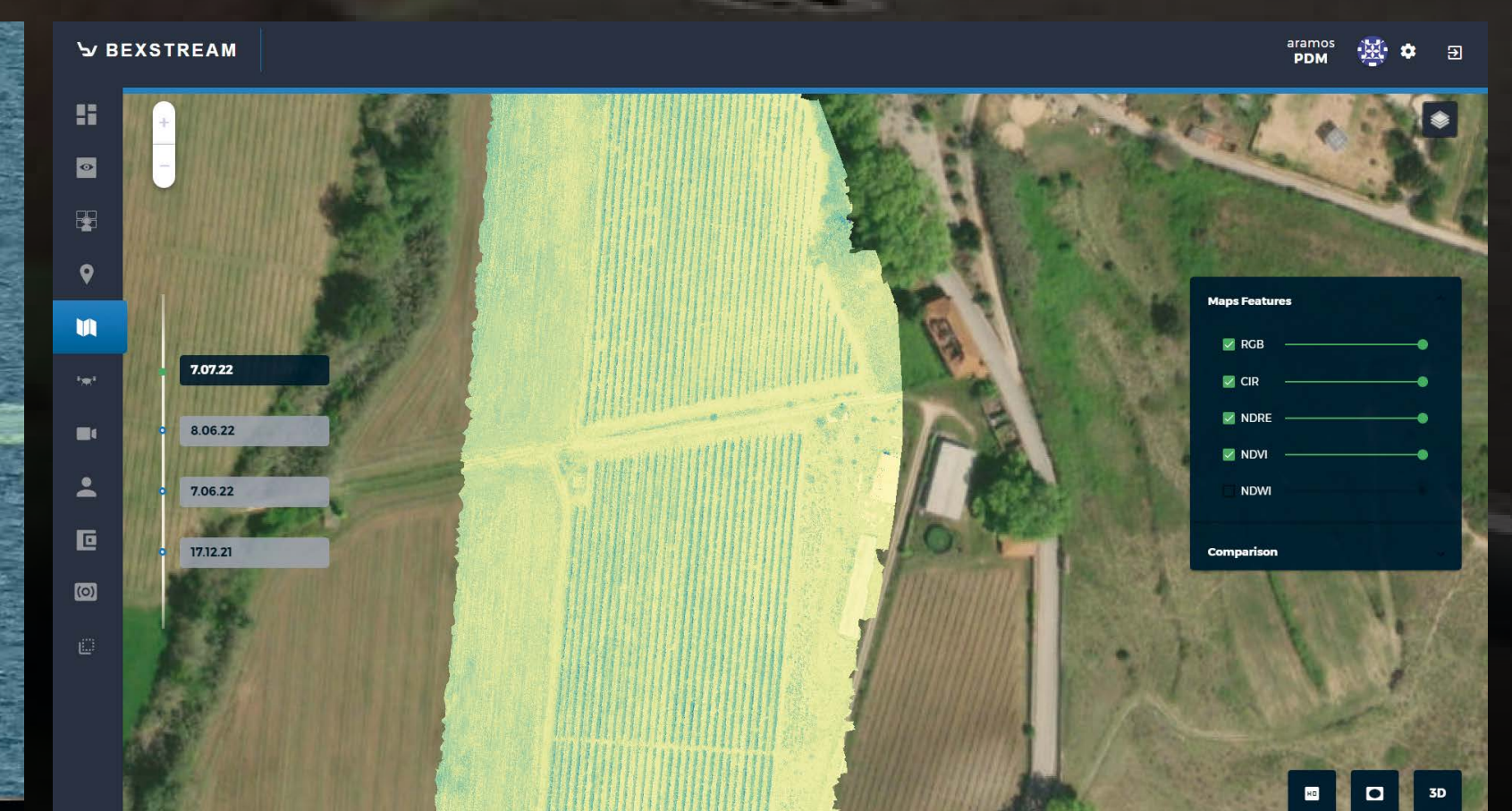
Habour Protection
- 80x Zoom



Complete structural analytics
- 3D Maps



Relentless Drone Pursuit
- Tracking mode



Rapid Mapping
- Multispectral maps

VT516

Efficient. Resilient. Innovative.

The ultimate hybrid UAV solution for ISR and mapping. This SoA VTOL (vertical take-off and landing) UAV can transition seamlessly from quadcopter to fixed-wing mode, giving you maximum flexibility and efficiency in the field. And with the unique assisted fixed-wing mode, the VTOne can reduce its speed while loitering in fixed-wing.

The VTOne's modular payload compartment makes it compatible with all previous payloads from Beyond Vision, ensuring that your investment in technology is protected. And with a flight time of 150 minutes and multiple redundant communication links, the VTOne is built to keep you connected and informed no matter the situation.

Maximum Flight Time	150 minutes
Positioning Accuracy	2 cm
Rate of Climb	20 km/h
Wind Tolerance	50 km/h
Cruise Speed	80 km/h
Maximum Speed	120 km/h
Voltage	44.4 V
Storage Capacity	2 x 17.500 mAh
Maximum Payload	2 kg
Aircraft's Weight	8.5 kg
Maximum Take-off Weight	16.5 kg



beXStream®

- Total remote control
- Mission management
- Fleet management and control
- Geomatics
- User-friendly



Use Cases



■ Reconnaissance and Surveillance

■ Target Acquisition

■ Counter Terrorism

■ Firefight Support

■ Border Security

■ Search and Rescue

■ Cargo Delivery

■ Electronic Warfare

■ Parameter Security

■ Crime Scene Investigation

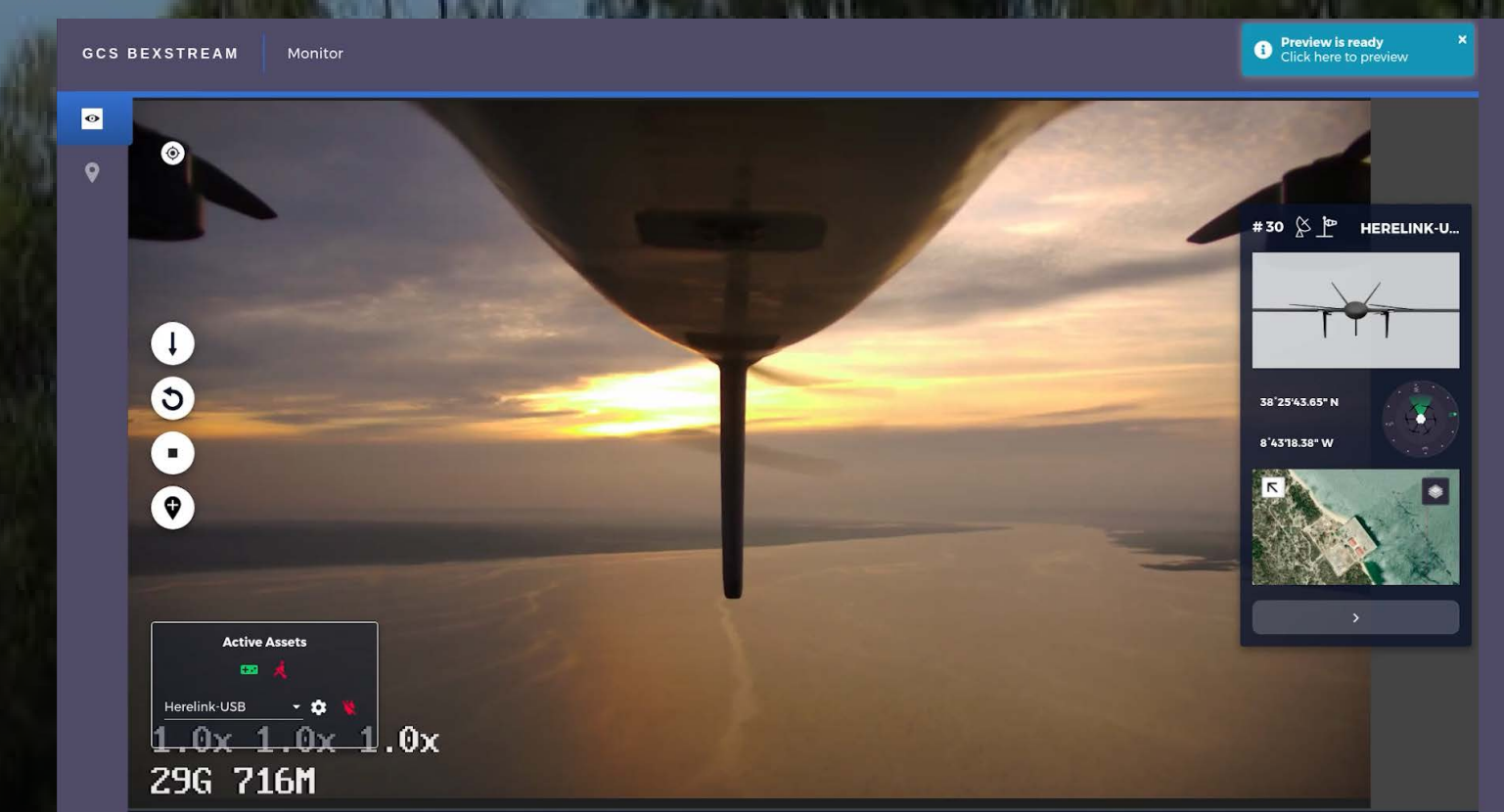
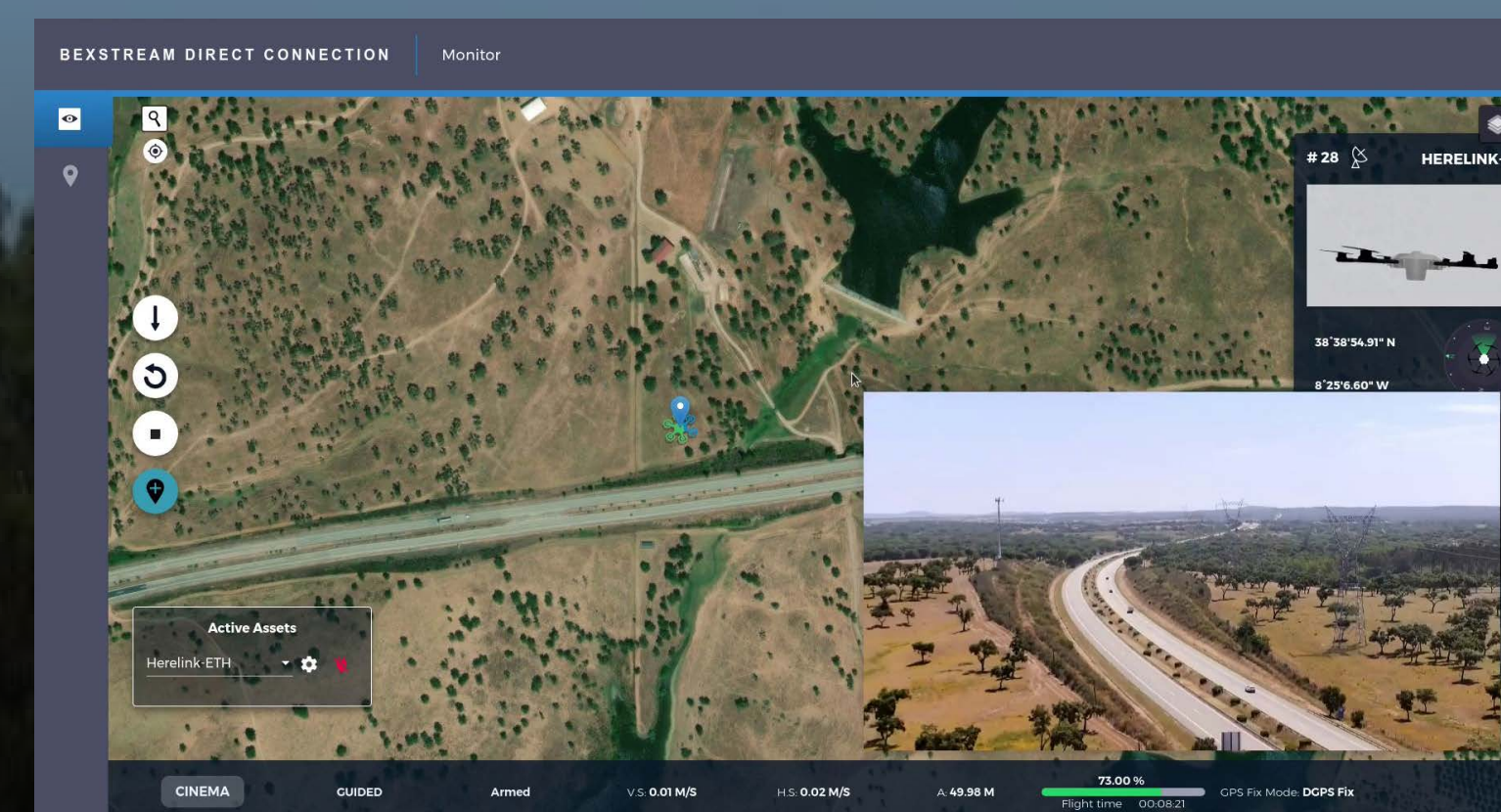
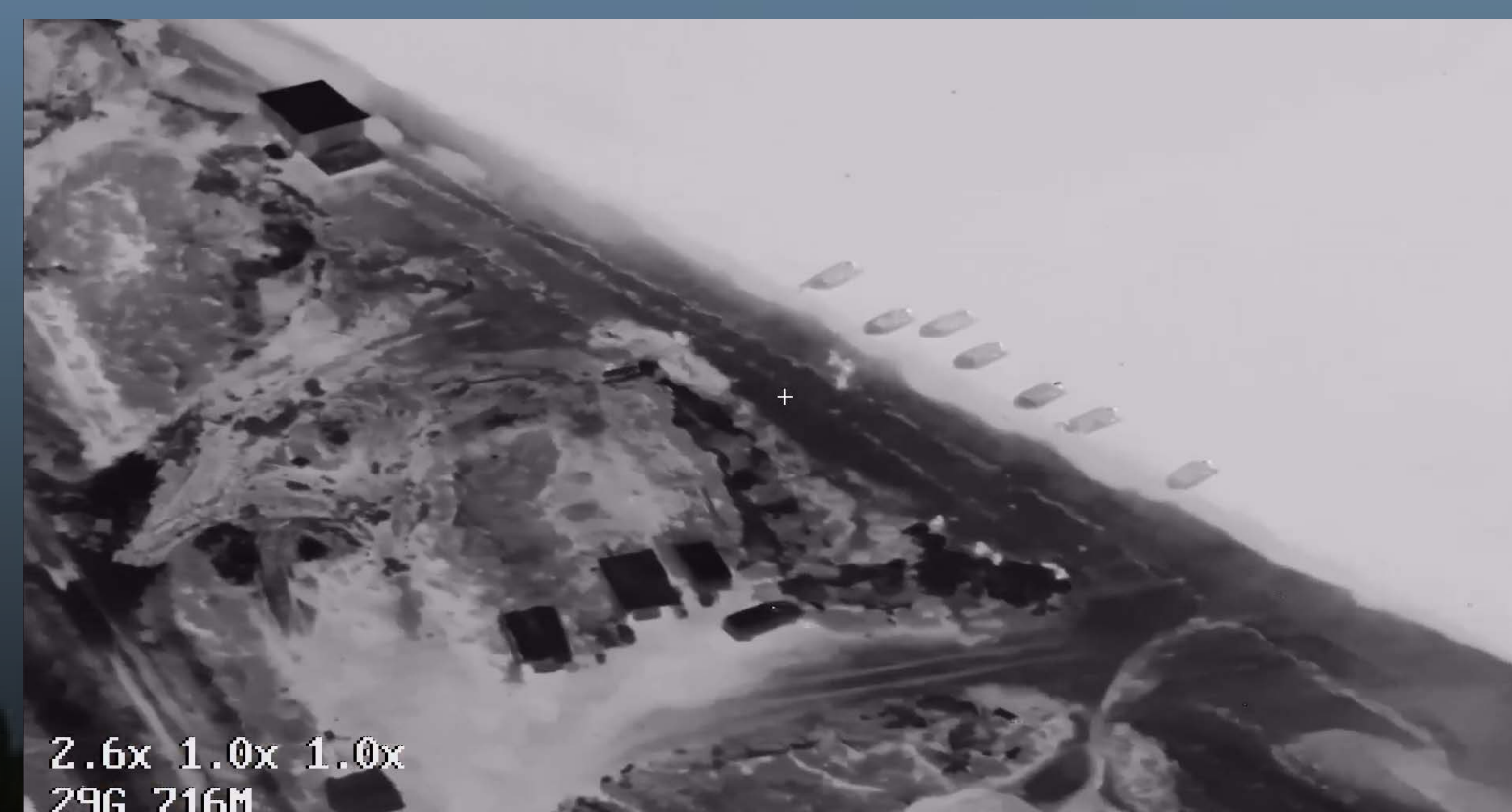
■ Surveillance of Critical Infrastructure

■ Battlefield Support

■ Hostage Situation Evaluation

■ Event Potential Threat Detect

■ Anti-piracy Surveillance



Features



■ **High-performance and durability:**
High-quality materials and advanced technology, ensuring their durability and high-performance in challenging environments.

■ **Efficient operation:**
Designed for efficient operation, allowing for extended flight time and minimal maintenance.

■ **Real-time data:**
Enabling timely decision-making and effective responses in critical situations.

■ **Remote operation:**
Can be operated remotely, allowing for increased safety and flexibility in operation.

■ **Adaptability and customization:**
Adaptable and can be customized to meet the specific needs of different defense applications.

■ **Electronic warfare capabilities:**
Designed to accommodate and operate with various electronic warfare payloads.

■ **Payload versatility:**
Can be equipped with a range of payloads, including gas detection sensors, chemical and biological sensors, ground-penetrating radar, atmospheric sensors, communication relays, cargo delivery systems, and water sampling systems.



Contact us to learn more about how our technology can enhance your defense operations.

 (+351) 911 890 642  beyondvision-join-the-future  info@beyond-vision.com  www.beyond-vision.com  beyondvision.tech  beyondvisiontech  beyondvision_pt  @beyond-vision